

# CONCIERGE

## U·P·D·A·T·E

Audio Visual/Equipment Rentals ■ Corporate Gifts ■ Notary Service ■ Taxis/Limousines/Town Cars ■ Preferred Vendor Referrals  
 Tenant Events/Seminars ■ Discount Tickets Theatre/Concerts/Sports/More ■ Research/Information Gathering ■ Dinner/Lunch Reservations

8000 TOWER SKYWAY LEVEL | 8:00 AM – 1:00 PM MONDAY – FRIDAY

Kirsten Gundershaug and Alex Tagtmeier | 952.345.8231 | 8000concierge@executiveconcierge.comcastbiz.net

### Take Note



#### Blood Drive

Memorial Blood Centers of MN's bloodmobile will return to Normandale Lake Office Park on Thurs., March 5, from 8 AM – 4 PM. Sign up online at [www.mbc.org/searchdrives](http://www.mbc.org/searchdrives). Click on Blood Drives, Normandale Lake Office Park's code is 0370. On March 5, register at the table in the 8500 Tower Atrium.

## Valentine's Day Ideas

**VALENTINE'S SPARKLING WINE AND PORT CLASS**  
**North Loop Wine & Spirits**  
**February 14 – 7-9 PM**  
 Twin Cities Wine Education is proud to present a special night of candlelight, romantic music, and tons of wine education featuring amazing sparkling wines and ports. More information at: [Twincitieswine.com](http://Twincitieswine.com)

**VALENTINE'S TC 5K**  
**Lake Nokomis**  
**February 8 – 10 AM**  
 Bundle up, grab your loved one or friend and choose either the 5K or the new one mile loop. Participants receive a medal and winter beanie. More information at: [TCMevents.org](http://TCMevents.org)

**ICE CASTLES**  
**New Brighton**  
[icecastles.com/Minnesota](http://icecastles.com/Minnesota)

**ICE SKATING**  
 Ice skate at Centennial Lakes in Edina. Skate on a 10 acre lake or take a spin on one of the park's Norwegian ice sleds. Then relax by one of three fireplaces in the pavilion. Concessions and skate rental available. <https://www.edinamn.gov/700/Ice-Skating>

**COUPLES MASSAGE & WINE TASTING**  
**February 14**  
 CenterPoint Massage is partnering with Lunds & Byerly's to provide you with the perfect pre-valentines day date night. The evening will begin at CenterPoint with a two hour workshop for couples to learn and practice basic principles and applications of massage. Participants will then go over to Lunds & Byerly's tasting room (St. Louis Park) to sample a delicious selection of wines. <https://www.centerpointmn.com/workshops/couples-massage-wine-tasting/>

## WELLNESS CENTER

NORMANDALE LAKE OFFICE PARK

### We're Celebrating 3 Years! 3rd Anniversary Open House

**8400 Tower, 1st Floor | Thurs., February 6 | 11 AM – 1 PM**

- Stop in for a complimentary detailed body composition scan from InBody.
- Receive a gait assessment from the professionals at TC Running.
- New members who sign-up during the anniversary event, will be entered into a drawing to win a FREE month membership.

### SEMINAR: A Functional Nutrition Approach to Health and Wellness

#### Part 2: Stress Less

**Thurs., February 13 | 11:30 AM | 8000 Tower Classroom**  
**Presenter: Amber Hanson, MS, LN Owner, Whole You Nutrition**

Stress can wreak havoc on our bodies and minds. Learn food and lifestyle habits that can support a healthy stress response for a happier, healthier life.

#### Part 3: Sleeping Your Way to Better Health

**Thurs., March 12 | 11:30 AM | 8000 Tower Classroom**  
**Presenter: Amber Hanson, MS, LN Owner, Whole You Nutrition**

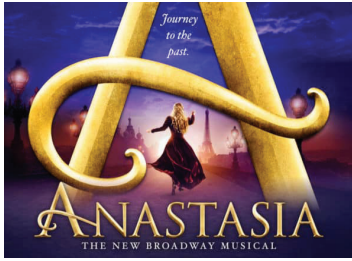
Sleep has a vital role in health – everything from risk of chronic diseases and mood disorders to food cravings and brain function. Did you know good sleep starts in the morning? Learn healthy sleep habits and eating patterns that can help support quality shut eye.

To register for either or both of these topics, email [8000concierge@executiveconcierge.comcastbiz.net](mailto:8000concierge@executiveconcierge.comcastbiz.net)

# TICKET OPPORTUNITIES

Please call before stopping by to pick up your tickets.

## NOW ON SALE



### ANASTASIA

Orpheum Theatre

**SAT., MARCH 28 – 2 PM**

Mn Flr, Sect 2, Row F – \$152  
Mn Flr, Sect 4, Rows H,N,P&Q – \$78.50

**SAT., APRIL 4 – 2 PM**

Mn Flr, Sect 2, Row D – \$152  
Mn Flr, Sect 4, Rows K&N – \$96.50

**SAT., APRIL 4 – 8 PM**

Mn Flr, Sect 1, Rows C – \$152  
Mn Flr, Sect 3, Rows L&N – \$106

Please order and pay by 2/26.

### CHANHASSEN DINNER THEATRE

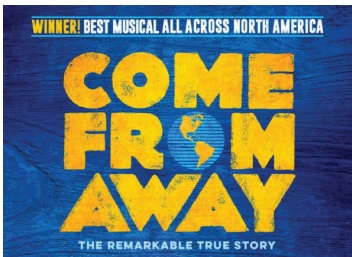
#### MAMMA MIA!

CLOSING FEBRUARY 22

#### MUSIC MAN

OPENING FEBRUARY 28

Get \$17 off main theatre dinner and show packages except matinees and Saturday night performances.



### COME FROM AWAY

Orpheum Theatre

**THURS., AUGUST 20 – 7:30 PM**

Mn Flr, Sect 2, Rows D&E – \$142  
Mn Flr, Sect 3/4, Rows K,M&N – \$96.50

**SAT., AUGUST 22 – 8 PM**

Mn Flr, Sect 1, Rows C&D – \$152  
Mn Flr, Sect 3, Rows G, J-L – \$106

Come From Away takes you into the heart of the remarkable true story of 7,000 stranded passengers and the small town in Newfoundland that welcomed them. Cultures clashed and nerves ran high, but uneasiness turned into trust, music soared into the night, and gratitude grew into enduring friendships.

### DISNEY ON ICE "ROAD TRIP ADVENTURES"

Target Center

**FRI., MARCH 13 – 10:30 AM**

Sect 104, Row C – \$18.50

**FRI., MARCH 13 – 7 PM**

Sect 138, Rows A&B – \$38  
Sect 132, Rows F&G – \$33  
Sect 106, Rows G&H – \$28

**SAT., MARCH 14 – 11 AM**

Sect 132, Row 1 – \$101  
Sect 110, Row A – \$76  
Sect 111, Rows C&D – \$56  
Sect 104, Rows A&B – \$46  
Sect 136, Rows 6&7 – \$46  
Sect 109, Rows E&F – \$41

**SAT., MARCH 14 – 3 PM**

Sect 110, Rows C&D – \$56  
Sect 132, Rows C&D – \$56  
Sect 136, Rows 6&7 – \$46  
Sect 111, Row E – \$41

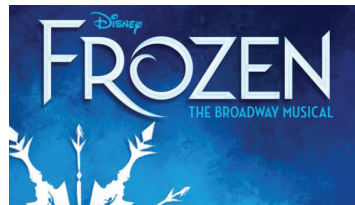
**SAT., MARCH 14 – 7 PM**

Sect 111, Rows B-D – \$43  
Sect 104, Row 9 – \$38  
Sect 132, Row F – \$33

**SUN., MARCH 15 – 1 PM**

Sect 104, Row 9 – \$46  
Sect 133, Row H – \$41  
Sect 101, Row G – \$36

Hit the road with Mickey and his pals for a high-octane road trip adventure. Exciting twists and turns await as Mickey, Minnie, Goofy embark on a wild ride to your favorite Disney destinations. See the world from the rooftops of London, travel to sun-soaked Motunui, set off on a safari to the Pride Lands. Discover a whole new world as you're swept up in a princely parade and play at a larger-than-life carnival.



### FROZEN

Orpheum Theatre

**SAT., MAY 16 – 2 PM**

Mn Flr, Sect 1, Rows D&E – \$186  
Mn Flr, Sect 3, Rows J-M – \$116

**SAT., MAY 16 – 8 PM**

Mn Flr, Sect 1, Rows C&D – \$156  
Mn Flr, Sect 3, Rows H,J&K – \$106

**SAT., MAY 23 – 2 PM**

Limited Availability

**SAT., MAY 23 – 8 PM**

Limited Availability

**SUN., MAY 31 – 1 PM**

Mn Flr, Sect 1, Row C – \$186  
Mn Flr, Sect 4, Rows G&H – \$116

**SUN., MAY 31 – 6:30 PM**

Mn Flr, Sect 2, Row C – \$142  
Bal, Sect 5, Row B – \$116  
Mn Flr, Sect 4, Rows G&H – \$87.50

### HARLEM GLOBETROTTERS

**SAT., MARCH 28 – 2 PM & 7 PM**

Watch for a TICKET ALERT with more details.

### MERCYME

Target Center

**FRI., APRIL 3 – 7 PM**

Sect. 129, Row C; Mn Flr 2, Row 5 – \$76 (Regular price: \$78 + fees)

Sect. 130, Rows L&M – \$46 (Regular price: \$48 + fees)

Sect. 138, Row H – \$36 (Regular price: \$38 + fees)

Sect. 209, Row J – \$26 (Regular price: \$28 + fees)

## MINNEAPOLIS HOME +GARDEN SHOW

**FEBRUARY 26 – MARCH 1**

Minneapolis Convention Center

**WED., FEBRUARY 26 – 12 PM – 8 PM**

**THURS., FEBRUARY 27 – 12 PM – 9 PM**

**FRI., FEBRUARY 28 – 10 PM – 9 PM**

**SAT., FEBRUARY 29 – 10 PM – 9 PM**

**SUN., MARCH 1 – 10 PM – 6 PM**

Concierge Price: \$10.50

Regular Price: \$14

### MONSTER JAM

US Bank Stadium

**SAT., FEBRUARY 15 – 7 PM**

Pit Pass – \$15

Sect 124, Row 24 – \$40.50

Sect 114, Row 33 – \$35.50

Sect 103, Row 33 – \$35.50

Sect 101, Row R – \$35.50

Sect 121, Row 33 – \$28.50

Sect 345, Row B – \$23.50

### MY FAIR LADY

Orpheum Theatre

**THURS., MARCH 5 – 7:30 PM**

Mn Flr, Sect 2, Row P – \$142

Mn Flr, Sect 3/4, Row K – \$78.50

**SAT., MARCH 7 – 8 PM**

Mn Flr, Sect 2, Row O – \$142

Bal, Sect 5, Row D – \$142

Mn Flr, Sect 4, Rows H&N – \$106

Please order and pay by 2/5.

### SUMMER: THE DONNA SUMMER MUSICAL

Orpheum Theatre

**TUES., JULY 14 – 7:30 PM**

Mn Flr, Sect 2, Rows J&O – \$142

**FRI., JULY 17 – 8 PM**

Mn Flr, Sect 1/2, Rows G,K,O&R – \$142

Mn Flr, Sect 3/4, Rows L,M,N&R – \$86



### 2020 CONCIERGE DATES

HOME OPENER VS. OAKLAND A'S  
THURS., APRIL 2 – 3:10 PM

Sect 108, Rows 11-13 – \$53

Sect 102, Row 34 – \$35

Sect 308, Rows 4-6 – \$21

VS. LA ANGELS

SAT., JUNE 6 – 6:15 PM

Sect 120, Rows 17&18 – \$64

Sect 126, Row 34 – \$42

Sect 320, Row 4 – \$26

VS. NEW YORK YANKEES

SAT., JUNE 20 – 1:10 PM

Sect 120, Rows 15-17 – \$64

Sect 126, Row 36 – \$42

Sect 321, Row 7 – \$26

VS. HOUSTON ASTROS

FRI., JULY 31 – 7:10 PM

Sect 120, Rows 15-17 – \$64

Sect 126, Row 34 – \$42

Sect 321, Row 3 – \$26

VS. KANSAS CITY ROYALS

SUN., AUGUST 16 – 1:10 PM

Sect 120, Rows 15-17 – \$53

Sect 125, Row 34 – \$35

Sect 321, Row 3 – \$21

VS. DETROIT TIGERS

SUN., SEPTEMBER 20 – 1:10 PM

Sect 120, Rows 15-17 – \$53

Sect 126, Row 34 – \$35

Sect 320, Row 4 – \$21

### TOBYMAC

Target Center

**SAT., MARCH 7 – 7 PM**

Sect. 133, Rows A-D – \$46

Sect. 211, Rows A&B – \$36

Sect. 233, Rows F&G – \$26

Please order and pay by 2/5.

### TROLLS LIVE!

Orpheum Theatre

**SAT., APRIL 18 – 10 AM**

Mn Flr, Ctr, Rows L&M – \$84

Mn Flr, Ctr, Row Y – \$64

Bal, Sect 5, Row A – \$110